

C-4 DITCH WATERSHED

DRAINAGE IMPROVEMENTS

WHERE'S THE C-4 DITCH?

The C-4 Ditch Area is south of William and west of Broadview. It includes the following streets: Edgewood, Quince, Camellia, and Jewel.

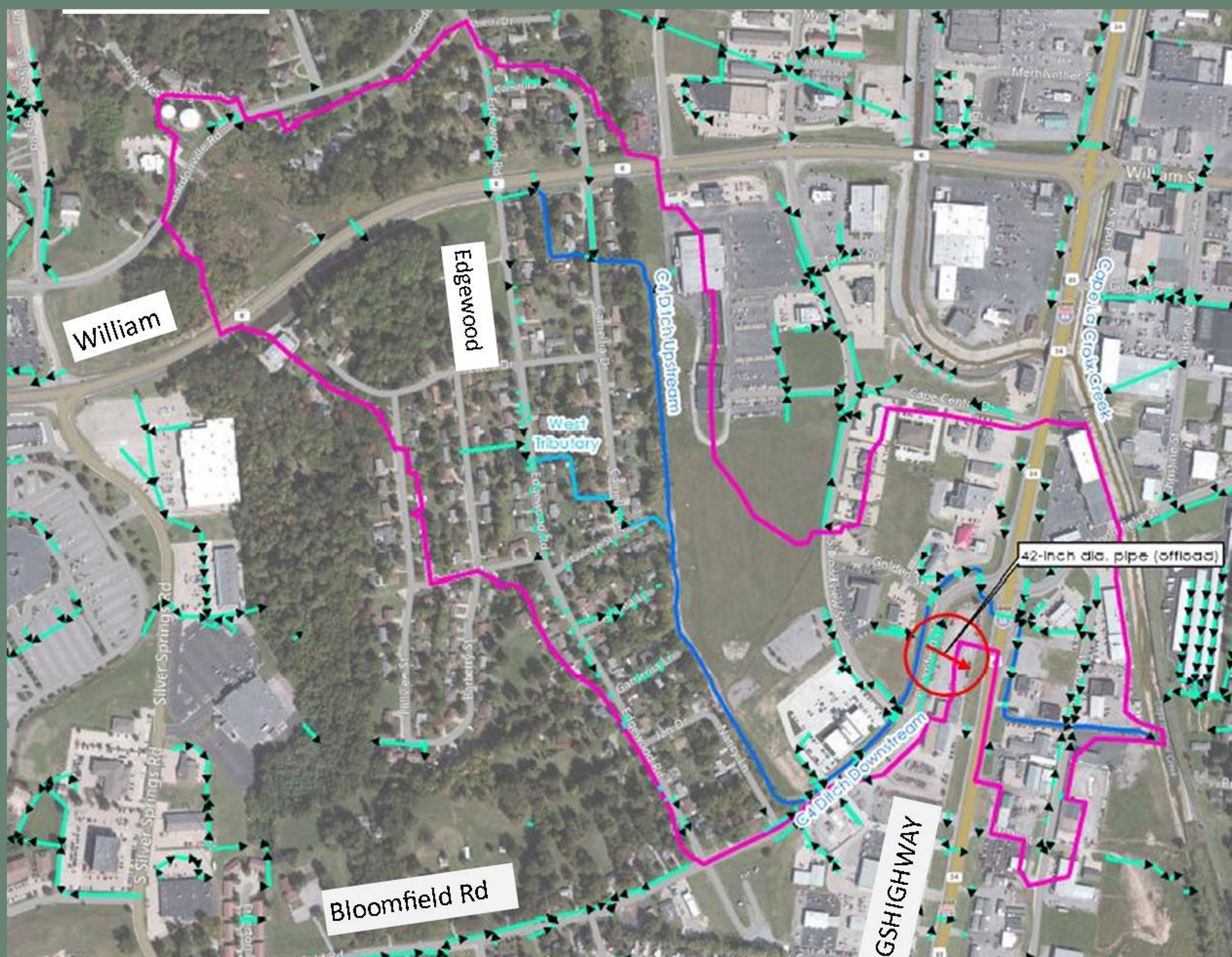
PROJECT OVERVIEW

Three projects are proposed for the C-4 Ditch area, including:

- Diversion pipe along William from Edgewood (\$183,000)
- Upgrading a pipe on Camellia at Quince (\$84,000)
- Improvements to the ditch behind the homes on Camellia just south of William and a new pipe crossing Camellia. (\$116,000)

Each of the projects will address yard flooding that has been problematic for many years.

C-4 WATERSHED



THREE PROJECT AREAS

